

# AI APPETIZERS

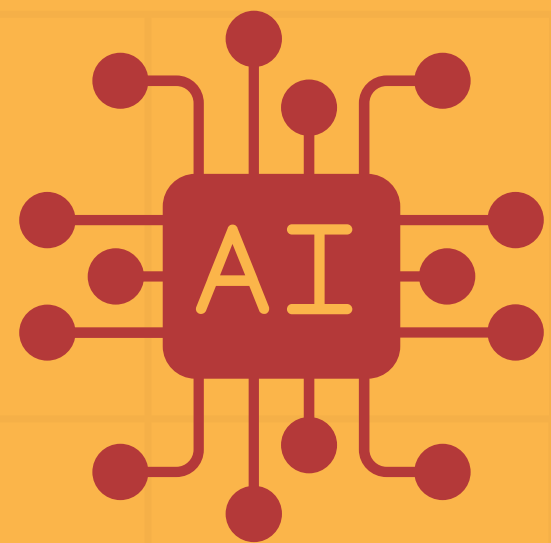
A Taste of Ethical AI for Educators

*Presented by Technology Integration Specialist,  
Christine Danhoff, of North Point ESC and PBS Western Reserve*



[bit.ly/aitransparency.](https://bit.ly/aitransparency)





# SMART CHOICES: AI TRANSPARENCY AND TEACHER GUIDANCE



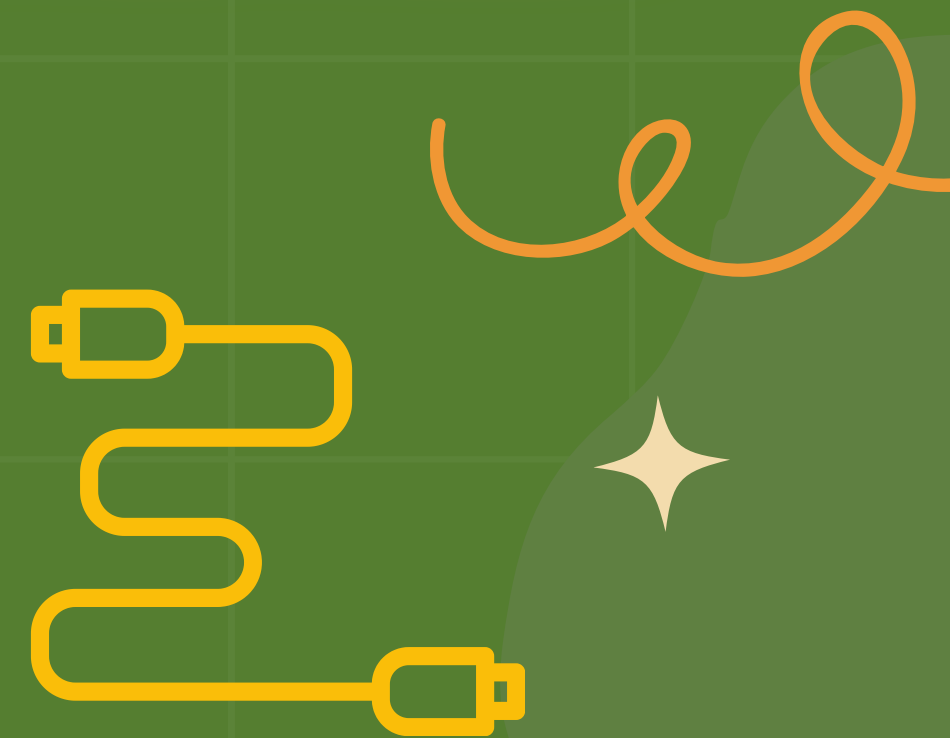
[bit.ly/aitransparency](https://bit.ly/aitransparency)



★  
**HOW HAVE YOU USED AI IN YOUR ROLE  
OR WITH STUDENTS?**



**UNMUTE OR DROP YOUR EXPERIENCES  
IN THE CHAT!**



# WHAT IS AI TRANSPARENCY?

The practice of making AI tools, processes, and decision-making understandable and visible to educators, students, and stakeholders.

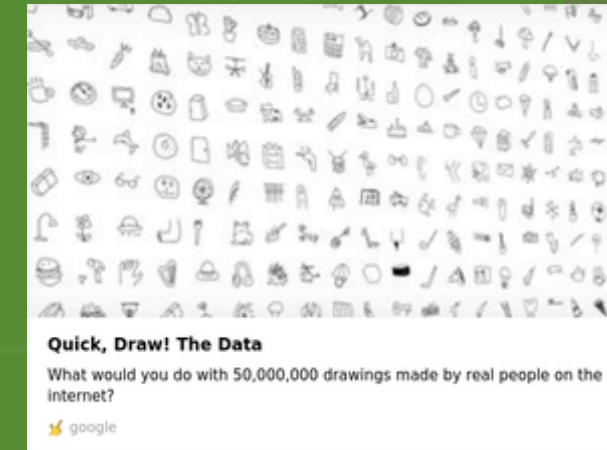
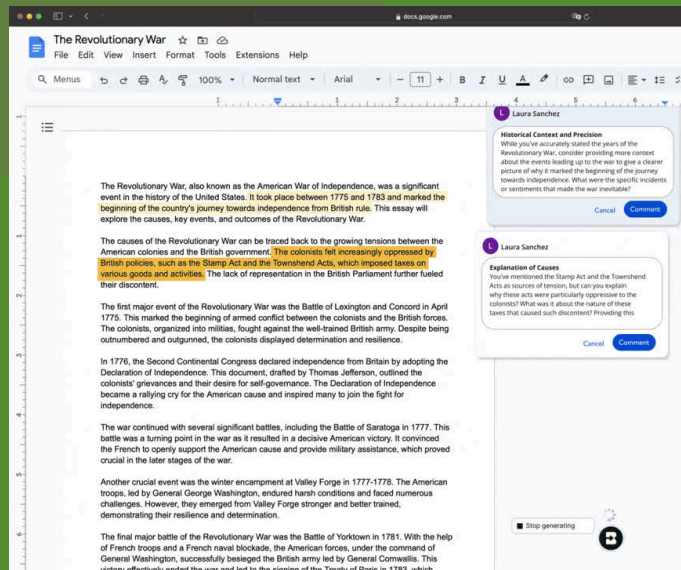
It ensures that AI is used ethically, responsibly, and in a way that supports learning rather than replacing critical thinking.





# AI TRANSPARENCY FOR ALL

1. Understand HOW AI Works



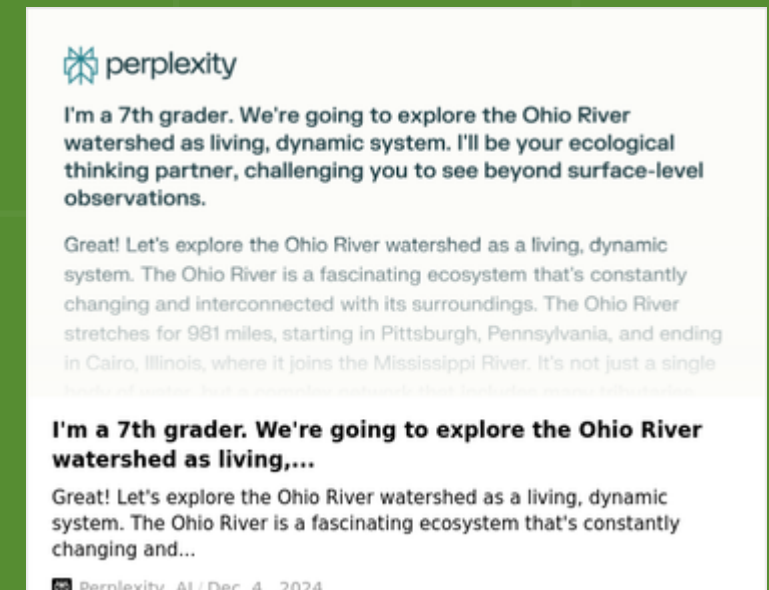
2. Disclose WHEN AI is Used

3. Ensure Data Privacy



4. Evaluate, Fact Check, and

Analyze AI Results



# WHY?

- Prevents over-reliance on AI-generated content
- Builds TRUST between educators, students, and AI technology
- Encourages ethical AI use and critical digital literacy skills



# AI Risk Assessments

At Common Sense, we know that successful AI is built with responsibility, ethics, and inclusion by design. This means that technical excellence alone is not enough for AI systems—AI is sociotechnical, which means that the technology cannot be separated from the humans and human-created processes that inform, shape, and develop its use.

That's why our AI risk assessments are contextual, taking into account the societal landscape in which the products will be used and actively seeking what information might be missing or invisible to an AI system. Our AI reviews act as "nutrition" labels for AI. They describe a product's opportunities, considerations, and limitations in a clear and consistent way, putting the right information you need at your fingertips.



Recommendation Systems  
in Social Media

Recommendation Systems in Social Media



Recommended Content in Instagram



Recommended Content in TikTok



Generative AI Chatbots

Generative AI Chatbots



Gemini



Perplexity



# SETTING CLEAR EXPECTATIONS

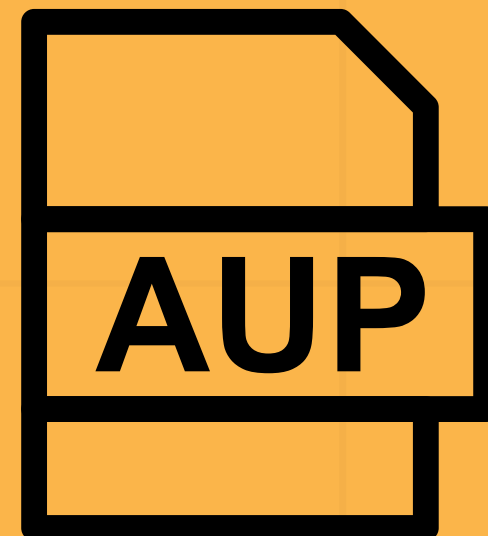
AI for Education

## LESSON 4 CO-CREATING AN AI POLICY

Introduction to AI for Students

Lesson 4: Co-Creating an AI Policy

AI for Education / Oct 31, 2024



Neola



# WHAT DOES THIS LOOK LIKE?

## Student AI Integration: 0 to Infinity Student AI Usage Continuum for Empowered Learning

To prepare ALL students for the AI-rich future that awaits them, it is imperative that they ALL learn ABOUT AI, and have opportunities to learn WITH AI in increasingly interactive and complex ways.

	<h3>AI Free/AI Resistant</h3> <ul style="list-style-type: none"><li>• Work must be completed entirely without any AI assistance.</li><li>• Students must rely entirely on their own knowledge, understanding, and skills.</li><li>• Any AI use is a violation of student academic integrity policy.</li><li>• An academic honesty pledge that AI was not used may be required.</li></ul>
	<h3>AI Assisted</h3> <ul style="list-style-type: none"><li>• AI is used for tasks as specified such as brainstorming, planning, feedback etc.</li><li>• No AI content is allowed in the final submission.</li><li>• Usage beyond specified tasks is a violation of academic integrity.</li><li>• Disclosure statement should be submitted with final product; be prepared to share links, screenshots, etc as evidence of all AI Chats</li></ul>
	<h3>AI Enhanced</h3> <ul style="list-style-type: none"><li>• AI is used interactively throughout to enhance your knowledge, efficiency, &amp; creativity.</li><li>• Student must provide human oversight and evaluation of all AI-generated content.</li><li>• Interactivity with AI and critical engagement with AI-generated content is required.</li><li>• Student is responsible for the accuracy and fairness of all AI-generated content.</li><li>• Disclosure statement should be submitted with final product; be prepared to share links, screenshots, etc as evidence of all AI Chats</li></ul>
 	<h3>AI Empowered</h3> <ul style="list-style-type: none"><li>• The full integration of AI allows for the creation of things that were previously impossible, empowering students as critical thinkers, creatives, and problem solvers.</li><li>• Student must provide human oversight and evaluation of all AI-generated content.</li><li>• Student is responsible for the accuracy, fairness, &amp; originality of all AI-generated content.</li><li>• All AI tools used and how they were used should be cited in a disclosure statement.</li></ul>





# LET'S ANALYZE AI TOGETHER

## Generative AI Critical Analysis Activities

AI for Education

The ability to critically evaluate the quality of Gen AI outputs is a crucial AI literacy skill. The following activities can help educators and students develop their abilities to analyze, evaluate, and improve text created by an AI.



Input an assignment into a chatbot and then grade the output using the assignment's rubric.



Input an assignment into a chatbot and request two or more responses; compare the outputs line-by-line and discuss which is the strongest/weakest based on a rubric.



Examine two versions of a text: one AI-generated and one written by a human. Compare the voice of each text, identifying uniquely human patterns of expression.



Create an AI-generated text passage related to your content area and then fact-check it using reliable sources.



Start with an AI-generated draft and find ways to improve it, focusing on areas currently under study in your class.

Follow up all activities by explaining your thinking orally or in writing. What do your thoughts suggest about the overall quality of AI outputs? What are the implications for AI's role in other work for the course?



ChatGPT

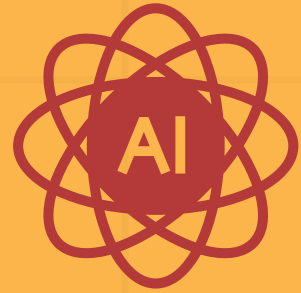
### AI Environmental Impact Analysis

Shared via ChatGPT

ChatGPT



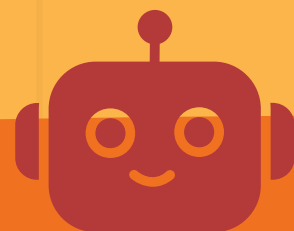
# Why AI Detectors Are Problematic (and what to do instead)



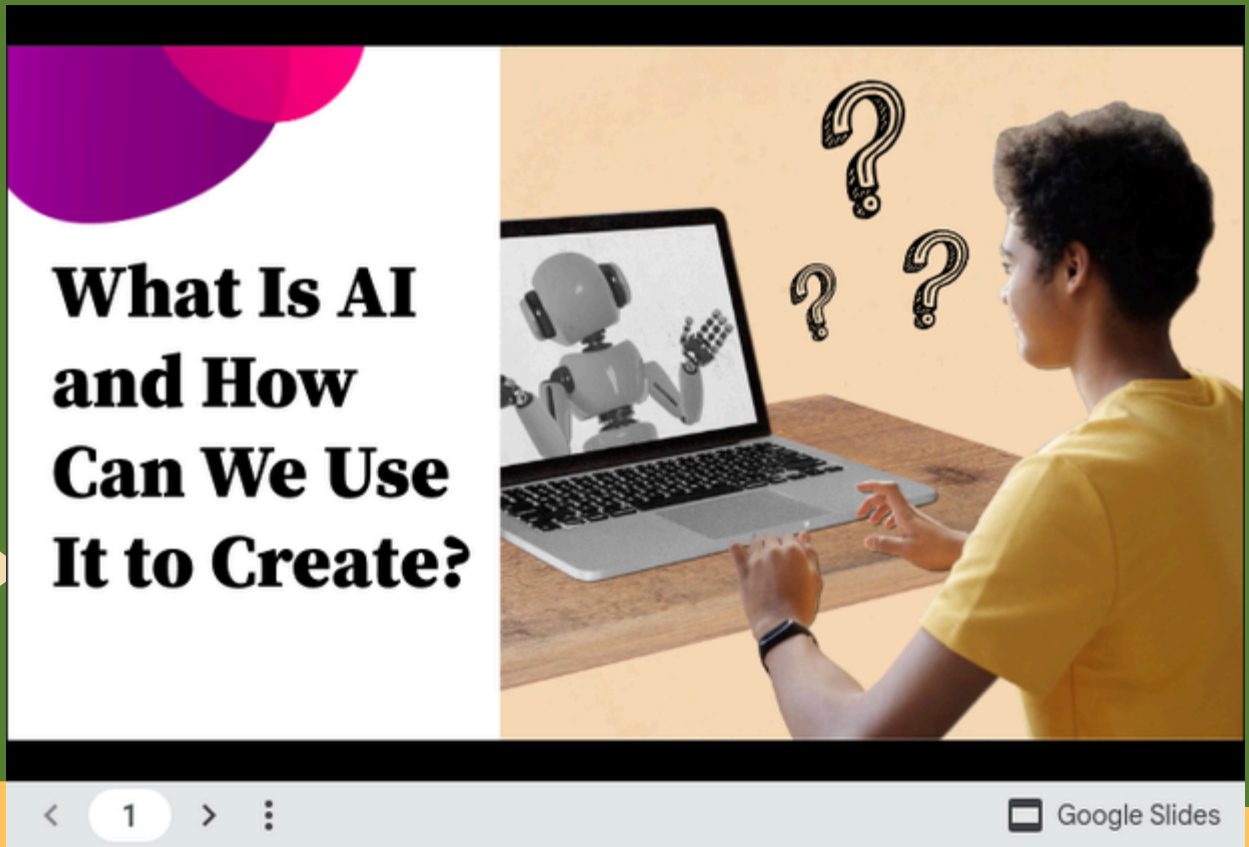
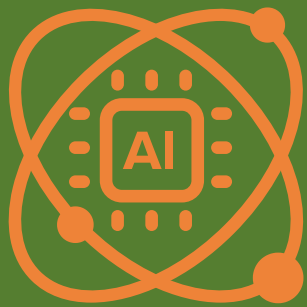
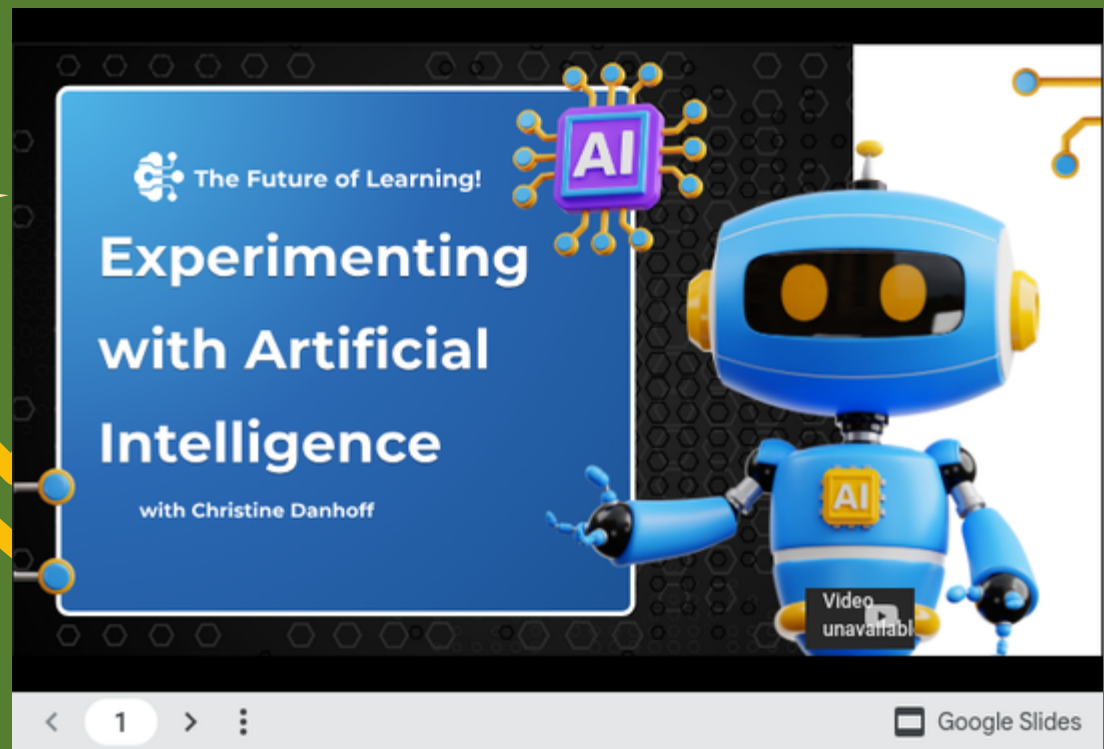
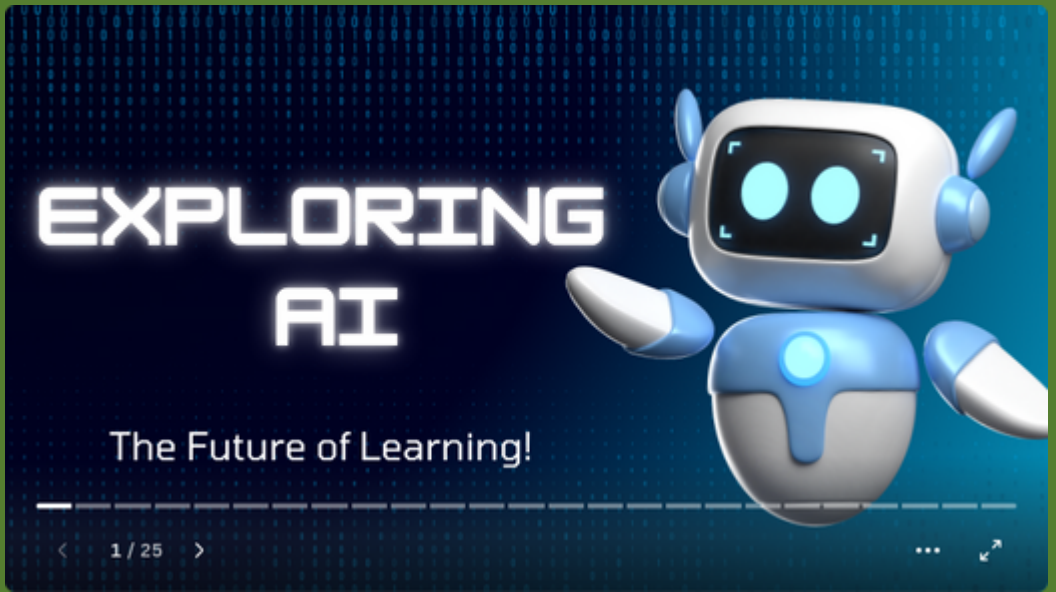
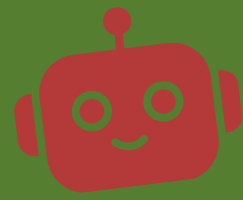
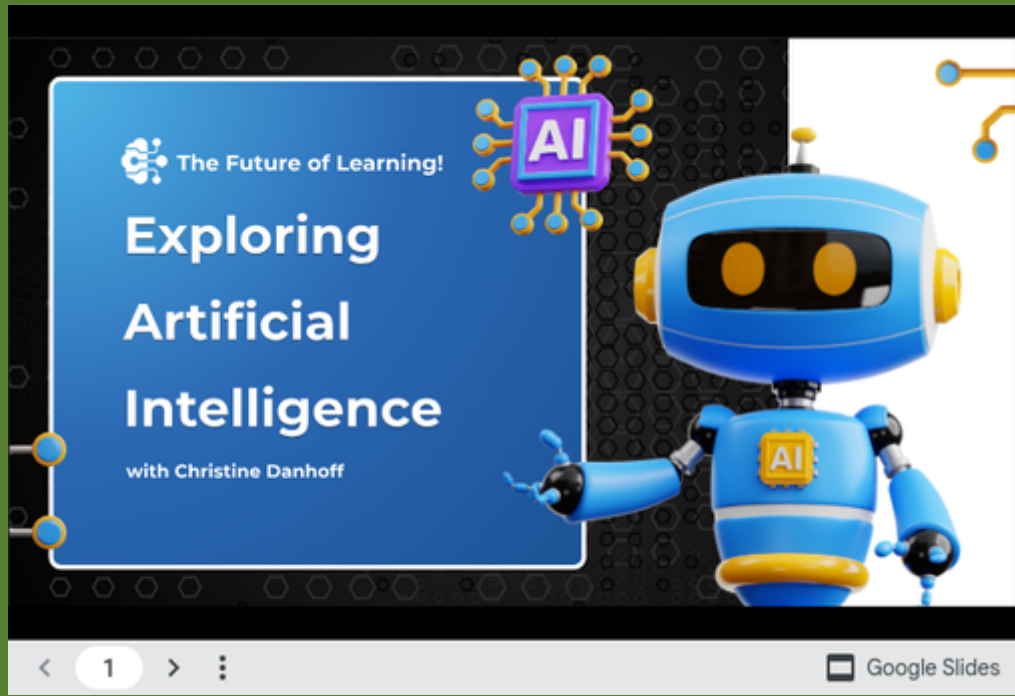
- ✓ Have conversations w/students about appropriate use of AI
- ✓ Collect writing samples throughout the year to use as growth indicators
- ✓ Capture student reflections on the AI collaboration process
- ✓ Think of collaboration with AI as similar to working with a tutor
- ✓ Have students share about how much AI was used for idea generation and feedback and how it impacted the final writing



- ✗ High frequency of false positives
- ✗ A lot of unnecessary work for teachers
- ✗ Lack of transparency about how they actually work
- ✗ Discrimination against non-native English speakers
- ✗ Promotes a false assumption that this is always bad
- ✗ Many institutions of higher learning are now turning these off



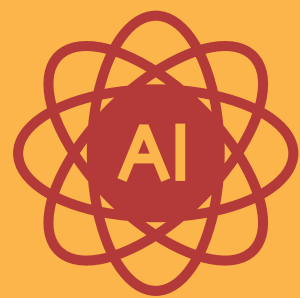




# TEACHING RESOURCES



**NOT ALLOWING STUDENTS TO  
USE AI IS LIKE NOT  
ALLOWING THEM TO USE THE  
INTERNET.**

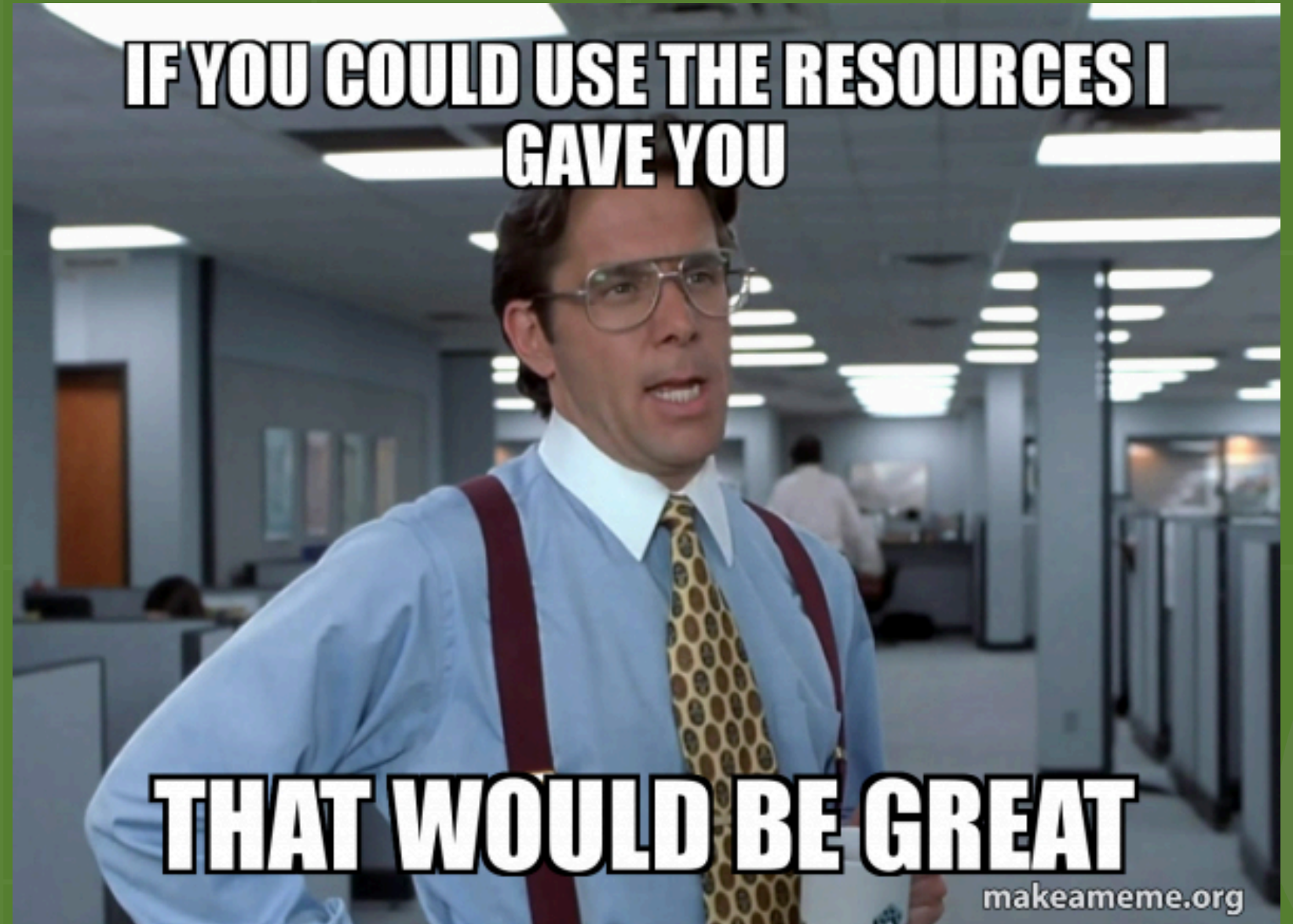


**NEXT WEEK**



**How can we shift from an “AI policing”  
mindset to an “AI-enhanced teaching and  
learning” mindset?**

✦ [bit.ly/aiappetizerspadlet](https://bit.ly/aiappetizerspadlet) ✦







# CHRISTINE DANHOFF



K-12 Technology Integration  
Specialist  
North Point ESC



@cmdanhoff



cdanhoff@npesc.org

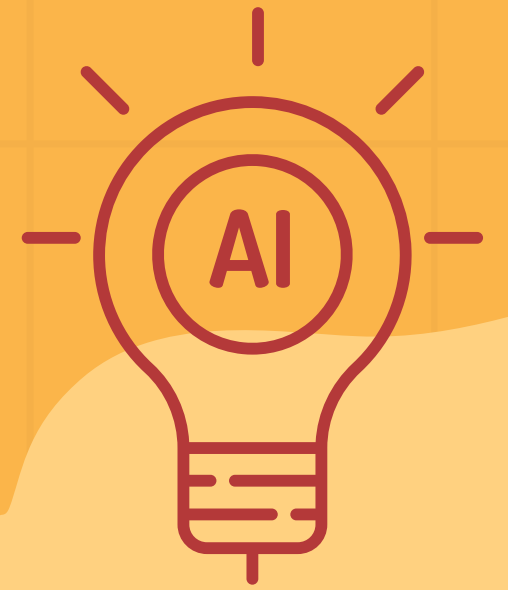


campsite.bio/cmdanhoff



# THANK YOU!

[bit.ly/aitransparency](https://bit.ly/aitransparency)



Book some time with me!

